

MISSISSIPPI PASS

This pass allows you to choose any 6 of the following attractions:



Delta Blues Museum Entrance (Clarksdale) :

Its many exhibitions take the visitor through a musical journey of the Blues from its inception to the present, leaving the visitor with a better understanding of the Blues.



Grammy Museum Entrance (Cleveland) :

With more than two dozen exhibits throughout the museum from Classical to Rock N Roll, Blues to Latin, you will certainly find your genre of music here among others.



BB Kings Museum Entrance (Indianola) :

This museum will take you through the life and music of Riley B. King, better known as B.B. King, perhaps the most famous Blues musician and singer of all time.



Mississippi Civil Rights Museum Entrance (Jackson) :

As you walk through the exhibits you start with the painful past and terror Blacks faced from segregationist and white supremacists (KKK) prior to the Civil Rights Act of 1968 to the present day.



The Burn (Historic Home) Tour (Natchez) :

Built in 1834, The Burn is the oldest documented Greek Revival residence in Natchez. On your guided tour, you will follow the lives of various prominent families that called The Burn home.



Dunleith Historic Inn Tour (Natchez) :

Perhaps the most photographed historic mansion in Natchez with its impressive 27 Tuscan columns, Dunleith was built shortly before the American Civil War in 1855 and history abounds in this estate.



Monmouth Historic Inn Tour (Natchez) :

Built in 1818, Monmouth is one of the oldest mansions in Natchez. Few estates of the American South typify the antebellum experience more than Monmouth.



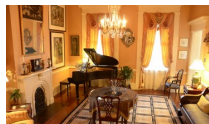
Gateway to the Blues Museum Entrance (Tunica) :

As the name implies, this is the gateway to the Mississippi Delta, birthplace of the Blues. Whether you are a Blues enthusiast or novice, this interpretive museum will not disappoint.



Elvis Presley Birthplace Entrance (Tupelo) :

Elvis Presley was born here in Tupelo in 1935. On display is his original two-room house, the church he attended and a museum with numerous artifacts of his life and music.



Anchuca Historic Mansion & Inn Tour (Vicksburg) :

Anchuca, a Choctaw Indian word meaning "Happy Home", is one of the most significant antebellum homes in Vicksburg. Experience the history on your self-guided tour (with an introductory movie).



Duff Green Mansion Tour (Vicksburg) :

Built in 1856 by a prominent citizen of Vicksburg, Duff Green has had a unique history you will learn on your tour as a home, Union hospital during the Civil War, an orphanage, and home again.

Rey Royal® Receptive Services:

Tel.: 1.504.269.1818 / E-mail: Tomas@ReyRoyal.com